

Figure 4: Diopside + Anorthite Phases (SERC)

Temperature	% An
1500	20%
1350	20%
1300	34%
1250	20%, s

Temperature	% An
1500	60%
1350	50
1300	45
1250	40, s

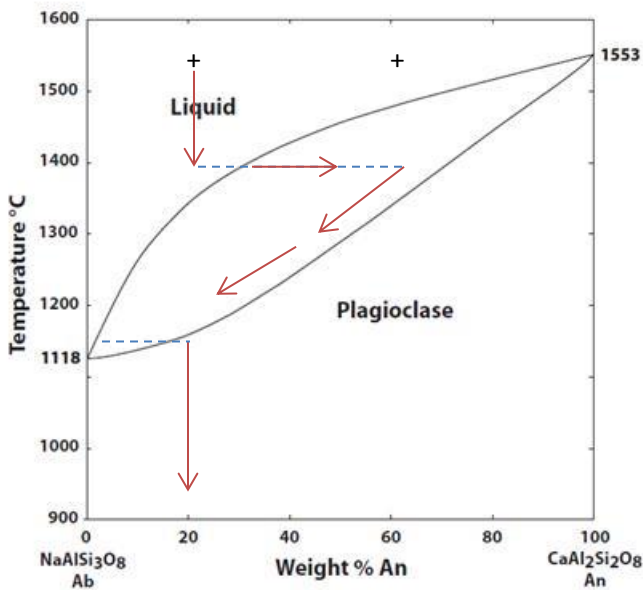


Figure 5: Albite + Anorthite Phases (SERC)

Temperature	% An
1500	20%
1400	20
1300	55
1200	35
1100	20

Temperature	% An
1500	60%
1400	65
1300	60
1200	60